

Kerns Road

Huntersville, North Mecklenburg County

For Sale



General Information

Lot #1
Price \$119,000 ~~\$150,000~~
Size 11.94 Acres
MLS # 849660

Lot #2
Price \$129,000 ~~\$198,500~~
Size 15.95 Acres
MLS # 849718

Seller is NC Licensed Realtor

Directions

Directions: I-77 North to I-485 West, then first exit onto Reames Road. Turn right, then left at stoplight onto Mt. Holly-Huntersville Road. First right turn is Kerns Road, then property is approximately 2 miles on left.

About the Property

- Two acreage tracts in the Huntersville area
- 5 miles from I-485 & the Northlake Mall area
- Heavily wooded
- Streams through the property
- Ideal for one home or a small community of less than 6 home sites
- Property is not restricted and the uses may be controlled by the Huntersville and Mecklenburg County ordinances
- Horses allowed per Huntersville
- Lenux Stables & Riding Academy across Kerns Rd from this Acreage

HECHT
Development

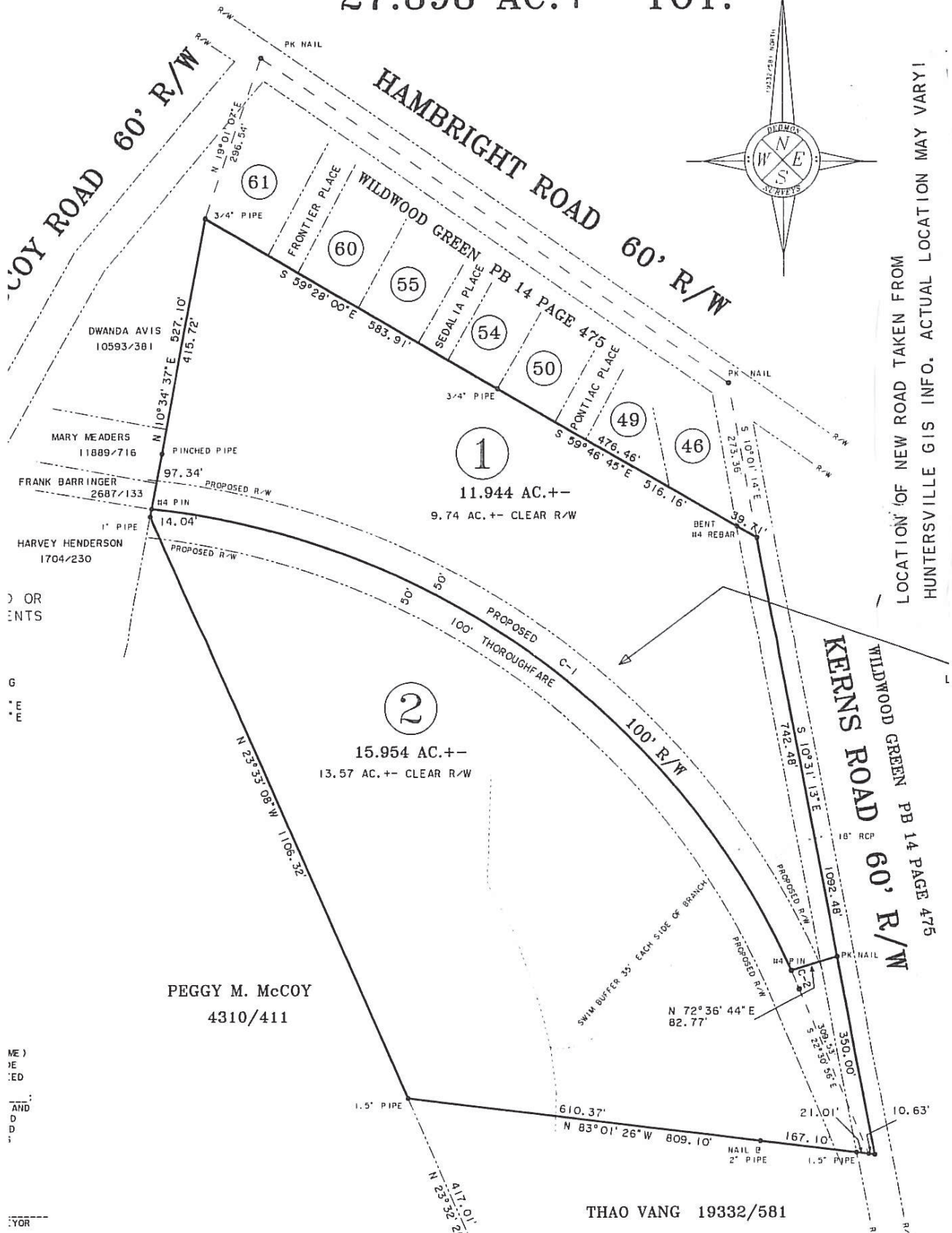
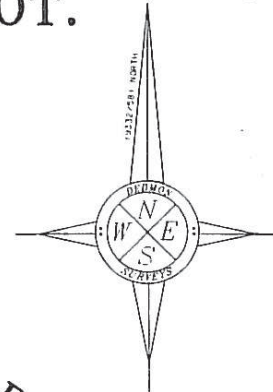
Bob Hecht
info@hechtdevelopment.com
704.809.2500 or 704.634.4444



www.HechtDevelopment.com
885 N. NC 16 Business, Suite B.
Denver, NC 28037

Plat

27.898 AC.+- TOT.



LOCATION OF NEW ROAD TAKEN FROM HUNTERVILLE GIS INFO. ACTUAL LOCATION MAY VARY!

OR
ENTS

G
E
E

ME)
E)
ED

AND
D
D
i

YOR